

LV Passport to History

# Guide to Programs FOR EDUCATION





# PASSPORT TO HISTORY

## Who We Are

Lehigh Valley Passport to History is a partnership of historic sites and resources in and around Pennsylvania's Lehigh and Northampton counties. Our group connects people with historical activities, events, tours, and exhibitions throughout the Valley. Our website helps draw attention to smaller historical sites and societies that do not have their own websites and helps the group leverage its publicity and marketing efforts.

Our mission is to connect the public with historical activities, events, tours, and exhibitions throughout the Valley and invite them explore the rich heritage that is right around the corner.

## Our Partners

Our partner sites include museums, research archives, and little-known architectural gems off the beaten path. See a complete list of member sites at [lvhistory.org/historic-sites](http://lvhistory.org/historic-sites).

\*Lehigh Valley Passport to History is funded in part with funding received through the County of Northampton's Hotel Tax Program, the Lehigh County Tourism Development grant program, and the Institute of Museum and Library Services.

# ABOUT THIS GUIDE

## Regional History Resources for Education

This guide includes programs for education offered by members of Lehigh Valley Passport to History. Each page features one program with brief descriptions and contact information to learn more. At the top of the page, you can quickly find the type of program (virtual, field trip, tour ...). In many cases, organizations offer additional programs and the flexibility to custom tailor the program to fit your needs. Programs are continuously developing and so please check the organization websites or call for any new additions. Please feel free to reach out to the organization directly to inquire about how they can help you build the perfect educational experience for your students.

If you have questions about this booklet, please contact one of the Education Committee members below.

LEHIGH VALLEY PASSPORT TO HISTORY

## CONTACT US

### WHITNEY DAVISON

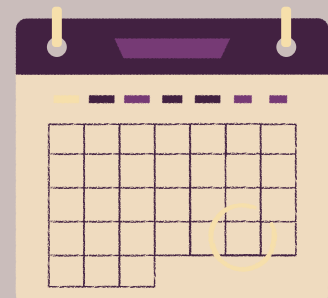
National Canal Museum  
education@delawareandlehigh.org

### SUSAN ELLIS

Moravian Historical Society  
sellis@moravianhistory.org

## SAVE THE DATE: TEACHER'S NIGHT OUT MAY 18, 2022 AT 4:30 PM

Join Passport to History at the Canal Museum at Hugh Moore Park, 2750 Hugh Moore Park Rd. Easton PA 18042. Learn about some of the great history resources in our region while gaining Act 48 credits.





## TABLE OF CONTENTS

<b>Field Trip</b>	<b>Page 5</b>
<b>Field Trip / Classroom Visit</b>	<b>Page 16</b>
<b>Classroom Program</b>	<b>Page 19</b>
<b>Assembly / Classroom / Virtual</b>	<b>Page 20</b>
<b>Field Trip or Virtual Program</b>	<b>Page 22</b>
<b>Virtual Programs</b>	<b>Page 24</b>
<b>Box Programs</b>	<b>Page 31</b>
<b>Curriculum</b>	<b>Page 32</b>
<b>Training Program / Act 48</b>	<b>Page 34</b>

## Museum Experience

The National Canal Museum offers hands-on exhibits about the science, technology, engineering and human experience behind the building and operation of the Lehigh and Delaware canals of the 1800s. Students will be grouped into small groups and work through stations throughout the museum with museum educators. Teachers can choose from a menu of a la carte activities to add on more hands on and living history activities to your day.



<b>Topic:</b>	Industries and Life of the 1800s in relation to the canals
<b>Cost:*</b>	\$12 per student + price of a la cart activities
<b>Length:</b>	2 -4 hours
<b>Maximum group size:</b>	30-50 depending on ability to use outside
<b>Adult/ Child Ratio:</b>	1:10
<b>Location/address for bus:</b>	2750 Hugh Moore Park Rd Easton PA 18042 or on site at school
<b>Grade Level/ Ages:</b>	Elementary
<b>Accommodations?</b>	Handicap accessible
<b>Other information:</b>	Boat rides and use of the park is available depending on the season. Each field trip is customized to the school so it is best to contact the D&L for more information.

## Delaware and Lehigh National Heritage Corridor

The Delaware and Lehigh National Heritage Corridor preserves and interprets the 165-mile transportation route between Wilkes-Barre and Bristol, Pennsylvania including Easton's Hugh Moore Park. With two miles of restored Lehigh Canal, a canal boat attraction and a canal heritage museum, the 520-acre park nestled between the Lehigh Canal and Lehigh River is a throwback to the years when mules pulling canal boats on narrow towpaths was a common sight. The D&L interprets this fascinating period of American history in the park through tours of the National Canal Museum, programming and rides on the 110-passenger Josiah White II canal boat.



**Contact:** Whitney Davison  
**Phone:** 610-984-4753  
**Email:** [education@delawareandlehigh.org](mailto:education@delawareandlehigh.org)

**Website:** [www.canals.org](http://www.canals.org)  
**Address:** 2750 Hugh Moore Park Rd  
 Easton, PA 18042

## Museum School Group Tours

Small group museum tours of the Pennsylvania Longrifle Museum showcasing Henry firearms produced in the Boulton Gun Works for the American Fur Trade, the War of 1812, and the Civil War. Small group museum tours of the 1832 J. Joseph Henry mansion displaying 200 years of Henry family history including original furniture, musical instruments, clothing, and toys. 18th century living history demonstrations can be added to your school's field trip. Options include Dutch Oven Cooking, Longrifle demonstrations, Blacksmithing demonstrations, Henry Family History Talks.



<b>Topic:</b>	Tours of the PA Longrifle Museum and the 1832 J. Joseph Henry House
<b>Cost:</b>	\$5 per student, \$7 per adult, every 10 students = 1 free adult
<b>Length:</b>	Two museum tours 20 minutes each; add on demonstrations available 15 minutes each
<b>Maximum group size:</b>	150
<b>Adult/ Child Ratio:</b>	1:10
<b>Location/address for bus:</b>	402 Henry Road, Nazareth PA
<b>Grade Level/ Ages:</b>	3rd through 12th grades
<b>Accommodations?</b>	Handicap accessible portable toilets are provided.
<b>Other information:</b>	N/A

## Jacobsburg Historical Society

Jacobsburg Historical Society was founded in 1972 to preserve the beauty of the Bushkill Creek Valley, particularly the Henry's Woods area. They pledged to bring to life the rich history and culture of the lost industrial community area of Jacobsburg, Filetown, and Boulton. We are still dedicated, fifty years later, to preserving and presenting the art and industry of making early American firearms and the character of the individuals and community that created and sustained that enterprise. We have transformed the historic Henry Homestead into the internationally-known Pennsylvania Longrifle Museum, opened J. Joseph Henry's 1832 mansion as a fascinating house museum for the public, and organized and continues to develop an important Archive that researchers use to study two hundred years of American history.

**Contact:** Amy Gular  
**Phone:** 610-759-9029  
**Email:** [jacobsburg@rcn.com](mailto:jacobsburg@rcn.com)

**Website:** [www.JacobsburgHistory.com](http://www.JacobsburgHistory.com)  
**Physical address:** 402 Henry Road, Nazareth PA  
**Mailing address:** PO Box 345 Nazareth PA 18064

## Immersion Day

Immersion Days introduces students to the science, technology, engineering and math behind the building and operation of the Lehigh and Delaware canals of the 1800s. After beginning with a 35-minute ride on the Josiah White II, the students rotate around four lesson sites and nine interactive activities: simple machines, friction and buoyancy, the geology and technology surrounding iron making and blacksmithing, and cultural aspects of canal life.



<b>Topic:</b>	Industries and Life of the 1800s in relation to the canals
<b>Cost:*</b>	\$12 per student
<b>Length:</b>	Full school day runs April thru June
<b>Maximum group size:</b>	120
<b>Adult/ Child Ratio:</b>	1:10
<b>Location; address for bus:</b>	2750 Hugh Moore Park Rd Easton PA 18042 or on site at school
<b>Grade Level/ Ages:</b>	Elementary
<b>Accommodations?</b>	Handicap accessible
<b>Other information:</b>	This trip aligns nicely with our Tales of the Towpath curriculum.

## Delaware and Lehigh National Heritage Corridor

The Delaware and Lehigh National Heritage Corridor preserves and interprets the 165-mile transportation route between Wilkes-Barre and Bristol, Pennsylvania including Easton's Hugh Moore Park. With two miles of restored Lehigh Canal, a canal boat attraction and a canal heritage museum, the 520-acre park nestled between the Lehigh Canal and Lehigh River is a throwback to the years when mules pulling canal boats on narrow towpaths was a common sight. The D&L interprets this fascinating period of American history in the park through tours of the National Canal Museum, programming and rides on the 110-passenger Josiah White II canal boat.



**Contact:** Whitney Davison  
**Phone:** 610-984-4753  
**Email:** [education@delawareandlehigh.org](mailto:education@delawareandlehigh.org)

**Website:** [www.canals.org](http://www.canals.org)  
**Address:** 2750 Hugh Moore Park Rd  
 Easton, PA 18042

## Where Northampton County Was Born

Students will be introduced to key figures in early Northampton County history. Cemetery tours will also highlight local connections to major historical figures including President George Washington, Benjamin Franklin, and President Theodore Roosevelt.



<b>Topic:</b>	Craig's Scotch-Irish Settlement (1728)
<b>Cost:*</b>	Free
<b>Length:</b>	As you wish
<b>Maximum group size:</b>	25
<b>Adult/ Child Ratio:</b>	1:25
<b>Location/address for bus:</b>	4965 Nor-Bath Blvd. Northampton, PA.
<b>Grade Level/ Ages:</b>	Grades 3-8
<b>Accommodations?</b>	Yes, handicap accessible.
<b>Other information:</b>	This program highlights local history not taught in schools.

## Horner's Cemetery Historical Society

Horner's is noted as being the oldest cemetery in Northampton County. The land Horner's Cemetery lies on was part of Craig's Scotch- Irish Settlement, a group of Ulster immigrants who arrived in Philadelphia and settled in Northampton County in 1728 – years before the Moravians settled in Nazareth and Bethlehem. While the newly settled community struggled to establish itself in the New World, a woman by the name of Jane Horner was struck in the head by a tomahawk, becoming the first woman killed during the French and Indian War, as well as the namesake for Horner Cemetery. The cemetery holds the remains of many founders and notable figures of Northampton County, including three generals, seven esquires, four doctors, three ministers, and at least 21 documented veterans of four wars. The Horner's Cemetery Historical Society, a 501(c)(3) organization founded in 2011 by Peggy May Moser, aims to restore and upkeep the cemetery's memorials as well as to preserve, record, and disseminate the important history of Northampton County. Many members of the historical society have ancestors and close family members who are buried in the cemetery, making the preservation of the past a personal mission as well as an educational one.

**Contact:** Peggy M. Moser  
**Phone:** 610-984-4532  
**Email:** peggymaymoser@verizon.net

**Website:** [hornerscemetery.org](http://hornerscemetery.org)  
**Address:** 4955 Nor Bath Blvd,  
 Northampton, PA 18067



## Third Grader Visit to the Lutz-Franklin Schoolhouse

Step back in time to experience the learning environment of students who attended the one-room schoolhouse during the years 1930-1958. Pre-visit orientation materials are dropped off to the classroom teacher before the field trip. During the visit, a trained docent stays in character as a one-room school teacher. School visits to the Lutz-Franklin One-Room Schoolhouse Museum are scheduled for mid-September to mid-November, April and May.



<b>Topic:</b>	Third Graders Visiting the Lutz-Franklin Schoolhouse
<b>Cost:*</b>	\$4.00/child
<b>Length:</b>	3-4 hours
<b>Maximum group size:</b>	30
<b>Adult/ Child Ratio:</b>	1:5
<b>Location; address for bus:</b>	4216 Countryside Lane Hellertown PA 18055
<b>Grade Level/ Ages:</b>	3rd grade
<b>Accommodations?</b>	Handicap accessible
<b>Other information:</b>	The curriculum meets state standards to understand the terms primary documents, material artifacts and historical places. The Lutz-Franklin Schoolhouse was placed on the National Register of Historic Places.

## Lower Saucon Township Historical Society

The Lower Saucon Township Historical Society seeks to preserve and maintain the Lutz-Franklin Schoolhouse as an example of 19th century Pennsylvania architecture, to utilize it as a place of public education, to acquire, conserve and archive artifacts, manuscripts, photographs, recordings and ephemera relevant to the history of Lower Saucon Township and to make them available for research, study and education.

**Contact:** Cyan Fink  
**Phone:** (610) 625-8771  
**Email:** lshistorical@gmail.com

**Website:** <https://lutzfranklin.wordpress.com>  
**Address:** P.O. Box 176  
 Hellertown PA 18055

## Museum Tour at the Moravian Historical Society

Visit the oldest Moravian building in America with a tour of the 1740 Gray Cottage and a museum tour at the Moravian Historical Society. Students will learn about the history of Nazareth as well the Moravians and their contributions to early American education, music, mapmaking, and trades. Group tours include a museum tour, a tour of the Gray Cottage, and a relevant hands-on activity. Tours and activities are tied to the curricular needs and can be customized to fit your particular classroom needs.



<b>Topic:</b>	Regional history
<b>Cost:*</b>	\$8 per person. One free admission for every 15 people.
<b>Length:</b>	75 minutes or more
<b>Maximum group size:</b>	100
<b>Adult/ Child Ratio:</b>	1:15
<b>Location; address for bus:</b>	214 E. Center Street, Nazareth, PA 18064
<b>Grade Level/ Ages:</b>	3rd–12th grade
<b>Accommodations?</b>	N/A
<b>Other information:</b>	The 1740-1743 Whitefield House Museum is located in an historic 3 1/3 story building without air conditioning or an elevator.



### Moravian Historical Society

The Moravian Historical Society is a nonprofit museum and historic site that preserves, interprets, and celebrates the rich culture of the Moravians. Located in Nazareth, Pennsylvania, MHS maintains the 1740–1743 Whitefield House and the 1740 Gray Cottage, the oldest surviving Moravian structure in North America. Recognized widely for its significant collection and historically important 18th-century site, the Moravian Historical Society is the third oldest historical society in Pennsylvania. The museum offers permanent and changing exhibitions and a museum store that features gifts, books, and handmade artisan items.

**Contact:** Charlotte Filiciotto

**Phone:** 610-759-5070

**Email:** [education@moravianhistory.org](mailto:education@moravianhistory.org)

**Website:** <https://www.moravianhistory.org/>

**Address:** 214 E. Center Street  
Nazareth, PA 18064

## Historic Nazareth Walking Tour

Have you ever wondered about the history of Nazareth's buildings and the types of people who lived there? Take a walk around town with a costumed historian who will delve into how Nazareth came to be, the people who once lived here, and the various uses Nazareth's buildings had over the years. This walking tour of historic Nazareth is tied to the curriculum and can be adapted to fit your specific lesson focus.



<b>Topic:</b>	Nazareth history
<b>Cost:*</b>	\$8 per person.
<b>Length:</b>	55 minutes-1 hour or more
<b>Maximum group size:</b>	One class or up to 20
<b>Adult/ Child Ratio:</b>	1:10
<b>Location/address for bus:</b>	214 E. Center St. Nazareth, PA 18064
<b>Grade Level/ Ages:</b>	3rd grade and up
<b>Accommodations?</b>	N/A
<b>Other information:</b>	The 1740-1743 Whitefield House Museum is located in an historic 3 1/3 story building without air conditioning or an elevator.



## Moravian Historical Society

The Moravian Historical Society is a nonprofit museum and historic site that preserves, interprets, and celebrates the rich culture of the Moravians. Located in Nazareth, Pennsylvania, MHS maintains the 1740–1743 Whitefield House and the 1740 Gray Cottage, the oldest surviving Moravian structure in North America. Recognized widely for its significant collection and historically important 18th-century site, the Moravian Historical Society is the third oldest historical society in Pennsylvania. The museum offers permanent and changing exhibitions and a museum store that features gifts, books, and handmade artisan items.

**Contact:** Charlotte Filiciotto

**Phone:** 610-759-5070

**Email:** [education@moravianhistory.org](mailto:education@moravianhistory.org)

**Website:** <https://www.moravianhistory.org/>

**Address:** 214 E. Center Street  
Nazareth, PA 18064

## General Galleries Field Trip

This is an informative and interactive guided tour of the Museum with one of our experienced Museum Educators. It is an in-depth, gallery tour with facilitated discussions and hands-on S.T.E.A.M. activities of all 4 of our main gallery spaces: Machinery Hall, Iron & Steel, Silk & Textiles, and Propane & Energy. We offer pre and post lessons that meet curriculum standards while providing educators the flexibility to adapt the content to fit their subject and student needs.



<b>Topic:</b>	Industrial History
<b>Cost:</b>	\$12.00/ student
<b>Length:</b>	1.5-2 hours
<b>Maximum group size:</b>	Minimum 5 students; 20 students per group; maximum of 60 students/3 groups.
<b>Adult/ Child Ratio:</b>	2:20
<b>Location/address for bus:</b>	602 E. 2nd St. Bethlehem, PA 18015
<b>Grade Level/ Ages:</b>	Grades K-12
<b>Accommodations?</b>	Handicap accessible, wheelchairs available
<b>Other information:</b>	N/A



The National Museum of Industrial History in Bethlehem, PA, is dedicated to preserving America's rich industrial heritage. Located in a 100-year-old Bethlehem Steel facility on the largest private brownfield in America, the Museum is home to exciting exhibits, engaging programs, and amazing history. We work towards inspiring the next generation of inventors, innovators, and entrepreneurs.

Our mission, in affiliation with the Smithsonian Institution, is to forge a connection between America's industrial past and the innovations of today by educating the public and inspiring the visionaries of tomorrow.

**Contact:** Emma Scheinmann  
**Phone:** (610) 694-6644  
**Email:** education@nmih.org

**Website:** <https://www.nmih.org/>  
**Address:** 602 E 2nd St.  
 Bethlehem, PA 18015

## Field Trip

Field Trips available for K-12 students at the museum or virtually.

<b>Topic:</b>	Northampton County History
<b>Cost:*</b>	Varies - fully customizable with scholarships often available for FREE tours
<b>Length:</b>	Varies - fully customizable
<b>Maximum group size:</b>	100 - larger groups may be able to be accommodated
<b>Adult/ Child Ratio:</b>	2:25
<b>Location/address for bus:</b>	342 Northampton Street Downtown Easton, PA 18042
<b>Grade Level/ Ages:</b>	K-12
<b>Accommodations?</b>	Accommodations are available. Historic houses are not ADA accessible, but accommodations can be made with notice.
<b>Other information:</b>	Curriculum aligned with PA State Standards. Supplemental material available.



## Northampton County Historical & Genealogical Society

Since 1906, Northampton County Historical and Genealogical Society (NCHGS) has collected, preserved, and showcased American history made in Northampton County. They share the stories of Northampton County's past to encourage personal reflection, community dialogue, and an understanding of history's impact on our lives. NCHGS operates three historic structures, one public park, and the Sigal Museum. The Sigal Museum offers interactive exhibitions, self-guided and docent-led tours, special children's activities, and programming with topics focusing on local and American history. The Sigal Museum is also home to the Jane S. Moyer Library and Archives, which provides a wealth of resources for students, scholars, and genealogical researchers. It is also home to the new Discovery Room, a space where kids can explore history hands-on with discovery boxes, building toys, and dress-up clothes. The Discovery Room can accommodate many learning needs, with soft seating, sensory toys, and adjustable lighting. It is the host of Easton's Cops N' Kids program, which promotes literacy and a love of reading and provides visitors with free books. In addition to a fun exploration space, the Discovery Room also serves as a museum classroom fully equipped with collaborative, ADA compliant student workspace and AV presentation technology.

**Contact:** Andrew Glovas

**Phone:** 610-253-1222

**Email:** a.glovas@northamptonctymuseum.org

**Website:** [www.sigalmuseum.org](http://www.sigalmuseum.org)

**Address:** 342 Northampton St. Easton PA 18042

## The Industrial Revolution

Visit the galleries and debate between the workers, inventors, and innovators detailing their lives, experiences and arguing the pros/cons of the Industrial Revolution. We will then discuss our current revolution, the Internet Revolution, and how it is reshaping society today. This field trip is approximately 1 hour in the galleries and 1 hour doing a facilitated activity.



<b>Topic:</b>	Industrial History
<b>Cost:*</b>	\$12.00/ student
<b>Length:</b>	2 hours
<b>Maximum group size:</b>	Minimum 5 students; 20 students per group; maximum of 60 students/3 groups.
<b>Adult/ Child Ratio:</b>	2:20
<b>Location/address for bus:</b>	602 E. 2nd St. Bethlehem, PA 18015
<b>Grade Level/ Ages:</b>	Grades 6-12
<b>Accommodations?</b>	Handicap accessible, wheelchairs available
<b>Other information:</b>	N/A



The National Museum of Industrial History in Bethlehem, PA, is dedicated to preserving America's rich industrial heritage. Located in a 100-year-old Bethlehem Steel facility on the largest private brownfield in America, the Museum is home to exciting exhibits, engaging programs, and amazing history. We work towards inspiring the next generation of inventors, innovators, and entrepreneurs.

Our mission, in affiliation with the Smithsonian Institution, is to forge a connection between America's industrial past and the innovations of today by educating the public and inspiring the visionaries of tomorrow.

**Contact:** Emma Scheinmann  
**Phone:** (610) 694-6644  
**Email:** education@nmih.org

**Website:** <https://www.nmih.org/>  
**Address:** 602 E 2nd St.  
 Bethlehem, PA 18015

## Life Long Ago Field Trips

Students explore a chosen subject through interactive tours of galleries (and reconstructed barn, when appropriate) and a craft-making activity.

<b>Topic:</b>	Early Immigration; Colonial Life; Life on the Farm; Textile Arts; Conestoga Wagon; Fraktur
<b>Cost:*</b>	\$3/child
<b>Length:</b>	one class period
<b>Maximum group size:</b>	30 students
<b>Adult/ Child Ratio:</b>	1:10
<b>Location; address for bus:</b>	105 Seminary Street
<b>Grade Level/ Ages:</b>	1-8
<b>Accommodations?</b>	handicap accessible
<b>Other information:</b>	The various topics correlate with History and/or Art standards



## Schwenkfelder Library & Heritage Center

The Schwenkfelder Library and Heritage Center is a historically rich and engaging museum with themes of religious freedom, tolerance, migration, and heritage through the stories of the Schwenkfelders and the Pennsylvania Germans of the Perkiomen region. Young people will be captivated by learning about the evolution of farm life in Pennsylvania. We offer full in-person field trips, field-ins at your school in your classroom or a virtual experience for you and your students. We also offer extensions for learning for all subject areas including reading, writing, social studies, agriculture, art, and music by collaborating with our museum educator.



**Contact:** Rachel Yoder  
**Phone:** 215-679-3013  
**Email:** rydoer@schwenkfelder.org

**Website:** [www.schwenkfelder.org](http://www.schwenkfelder.org)  
**Address:** 105 Seminary Street  
Pennsburg PA 18073

## The Story of Emmaus and the 1803 House

The 1803 House serves as a model colonial home in Emmaus and a place to explore how local families lived, worked, and played during the early 19th century.



<b>Topic:</b>	How people lived around 1803
<b>Cost:*</b>	Free
<b>Length:</b>	About one hour
<b>Maximum group size:</b>	35
<b>Adult/ Child Ratio:</b>	1:10
<b>Location/address for bus:</b>	55 South Keystone Avenue, Emmaus, PA 18049
<b>Grade Level/ Ages:</b>	1st grade through high school
<b>Accommodations?</b>	Handicap access to 1st floor
<b>Other information:</b>	N/A

## Friends of the 1803 House

In 1803, Jacob Ehrenhardt, Jr., son of one of the founders of Emmaus, built this stone, Federal-style home for his wife Susanna and their four daughters, Barbara, Anna Marie, Anna Eleonora and Suzanna. It was located near the Moravian Church, surrounded by crop fields, South Mountain, and a nearby stream. The house preserves the architecture of the Moravian culture of Colonial Pennsylvania and is located at 55 South Keystone Avenue, Emmaus, PA. It is managed by “The Friends of the 1803 House,” which was established in 1976. Our mission is to help preserve and maintain the 1803 House as a museum for the community of Emmaus. We protect the past while ensuring the next generation of Americans will learn from the lessons of our history.

**Contact:** Marian Schneck  
**Phone:** 610-737-9333  
**Email:** nanamts@ptd.net

**Website:** [www.1803house.org](http://www.1803house.org)  
**Address:** 55 South Keystone Avenue,  
Emmaus, PA 18049



## Guided tour of Easton Cemetery

Cemetery programs are handled by a group of volunteers and as such tours are not given on a regular basis. We would be happy to accommodate any group if we know well in advance. Weather is certainly a factor since this is an outdoor tour so it is suggested that a rain date is planned as well. The 4th grade tour includes a school visit to discuss the tour with the students and a one and a half hour tour in the cemetery with the teachers and docents.



<b>Topic:</b>	History including the Revolutionary and Civil Wars.
<b>Cost:*</b>	Free
<b>Length:</b>	1:30; can be adjusted to the time available to the group.
<b>Maximum group size:</b>	Groups of 15-20 are best with about 80 in total.
<b>Adult/ Child Ratio:</b>	One docent and one teacher per 15 students is ideal
<b>Location/address for bus:</b>	401 North Seventh Street in Easton
<b>Grade Level/ Ages:</b>	4th grade and older
<b>Accommodations?</b>	The roads are paved but many are not in very good condition. Students must be able to walk about a mile. Wheelchair accessible, but there are hills.
<b>Other information:</b>	There are no bathroom facilities available on the grounds. Resource information is provided to teachers along with activity booklets for the students. We have a very limited number of docents so advance notice of several weeks is essential. Other tours can be adapted to the grade level.

## The Historic Easton Cemetery

Easton Cemetery's parklike cemetery landscape design is based on the picturesque romantic styles of the early and late 19th century. Its landscape is set with thousands of examples of funeral artwork, in a variety of decorative styles, spanning Greco-Roman Revival, Gothic Victorian, and Art Deco. Established in 1849, Easton Cemetery is the earliest and best surviving example of a romantic parklike cemetery within the Lehigh Valley metro area. Architecturally noteworthy features include a Gothic Revival Gatehouse and office, stable, cemetery chapel, and a Gothic frame workshop.

The cemetery is listed on the National Register of Historic Places and has a signer of the Declaration of Independence (George Taylor) buried there.

**Contact:** Kay Wolff (cemetery volunteer)

**Phone:** 610-258-8528

**Email:** eastoncemetery@yahoo.com

**Website:** [thehistoriceastoncemetery.org](http://thehistoriceastoncemetery.org)

**Address:** 401 N 7th St, Easton, PA 18042

## Liberty Bell Museum Education Program

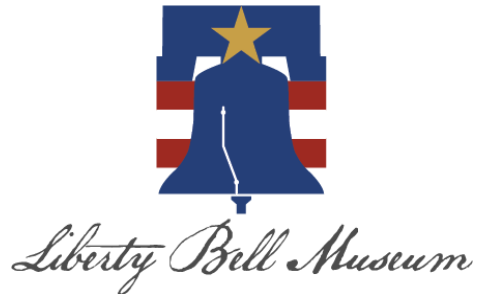
The 3rd grade program focuses on the simple machines used to move the Liberty Bell from Philadelphia to Allentown. The 7th grade program focuses on the science regarding the acoustics of bells and an artist's production of a mural on permanent display in our museum.



<b>Topic:</b>	Local History/Liberty Bell in Allentown
<b>Cost:*</b>	\$6 per student
<b>Length:</b>	2 hours
<b>Maximum group size:</b>	60
<b>Adult/ Child Ratio:</b>	1:10
<b>Location; address for bus:</b>	622 W. Hamilton St Bethlehem PA 18101
<b>Grade Level/ Ages:</b>	3rd grade to 7th grade
<b>Accommodations?</b>	Yes
<b>Other information:</b>	Our programs integrate the STEAM curriculum and endeavor to connect our local history with its national impact.

## Liberty Bell Museum

In 1962, the members of Zion's church and the wider community came together to build a shrine testifying to our unique role, safeguarding America's most sacred symbol of freedom. The area underneath the church was excavated, exposing the original foundation (which is pictured above in the header of this web site.) The State of Pennsylvania entrusted us with its replica Liberty Bell. Through the years, hundreds of thousands from the Lehigh Valley and around the world have visited and learned the story of the journey of the bells from Philadelphia to Allentown. In recent years, our educational purpose and mission have expanded, and the State Department of Education has designated us an Education Improvement Organization. Now known as the Liberty Bell Museum, this hidden gem in center city Allentown has changing exhibits, lecture series, historical re-enactments and events in partnership with Zion's Church, a ½ scale replica (child-sized) Conestoga wagon, as well as that holiday favorite, Pip the Mouse.



**Contact:** Rev. Joshua Knappenberger  
**Phone:** 610-435-4232  
**Email:** jknap@libertybellmuseum.org

**Website:** libertybellmuseum.org  
**Address:** 622 W Hamilton Street  
Allentown PA 18101

## Fraktur

Fraktur became a popular form of folk art practiced by the PA Germans, including the Schwenkfelders. Its long history shows how things can grow and take on new meanings. The program will begin with an illustrated history of the art form. Students then practice Fraktur by making their own birth certificate.



<b>Topic:</b>	Fraktur
<b>Cost:*</b>	\$3/child
<b>Length:</b>	90 minutes
<b>Maximum group size:</b>	30 students
<b>Adult/ Child Ratio:</b>	1 teacher/class
<b>Location; address for bus:</b>	N/A
<b>Grade Level/ Ages:</b>	1-8
<b>Accommodations?</b>	N/A
<b>Other information:</b>	9.3.1.D, 9.1.8.A, 8.2.3.B, 8.2.8.B

## Schwenkfelder Library & Heritage Center

The Schwenkfelder Library and Heritage Center is a historically rich and engaging museum with themes of religious freedom, tolerance, migration, and heritage through the stories of the Schwenkfelders and the Pennsylvania Germans of the Perkiomen region. Young people will be captivated by learning about the evolution of farm life in Pennsylvania. We offer full in-person field trips, field-ins at your school in your classroom or a virtual experience for you and your students. We also offer extensions for learning for all subject areas including reading, writing, social studies, agriculture, art, and music by collaborating with our museum educator.



**Contact:** Rachel Yoder  
**Phone:** 215-679-3013  
**Email:** rydoer@schwenkfelder.org

**Website:** [www.schwenkfelder.org](http://www.schwenkfelder.org)  
**Address:** 105 Seminary Street  
 Pennsburg PA 18073

## Colonial Historian

Invite our Colonial Historian to your classroom in person or online to learn more about life in the 18th century. Colonial Historians can cover topics including early Lehigh Valley history, colonial trades and industries, colonial clothing, and more! Our Colonial Historians can dress in traditional colonial fashion.



- Topic:** Regional history, colonial trades and industries, or colonial clothing. Please contact us for additional themes
- Cost:\*** \$50/session
- Length:** 45 minutes to an hour
- Maximum group size:** N/A
- Adult/ Child Ratio:** N/A
- Location; address for bus:** N/A
- Grade Level/ Ages:** 3rd to 7th grade. Older groups can be accommodated.
- Accommodations?** N/A
- Other information:** Programs can be adapted to fit curriculum needs.



## Moravian Historical Society

The Moravian Historical Society is a nonprofit museum and historic site that preserves, interprets, and celebrates the rich culture of the Moravians. Located in Nazareth, Pennsylvania, MHS maintains the 1740–1743 Whitefield House and the 1740 Gray Cottage, the oldest surviving Moravian structure in North America. Recognized widely for its significant museum collection and historically important 18th-century site, the Moravian Historical Society is the third oldest historical society in Pennsylvania. The museum offers permanent and changing exhibitions and a museum store that features gifts, books, and handmade artisan items.

**Contact:** Charlotte Filiciotto  
**Phone:** 610-759-5070  
**Email:** [education@moravianhistory.org](mailto:education@moravianhistory.org)

**Website:** <https://www.moravianhistory.org/>  
**Address:** 214 E. Center Street  
Nazareth, PA 18064

## Past and Present of the Lenape in Pennsylvania

Can be tailored to interests of school/class. We offer anything from academic talks to ceremonial events concerning all aspects of Lenape culture.



- Topic:** All/any things regarding the Lenape Native Americans
- Cost:\*** Honorariums are always appreciated!
- Length:** Can be tailored to interests of school/class
- Maximum group size:** No maximum group size
- Adult/ Child Ratio:** Any
- Location/address for bus:** Our speakers will come to your organization, or you can come to the Cultural Center in Easton PA.
- Grade Level/ Ages:** All ages, including higher education.
- Accommodations?** The cultural center unfortunately is not wheelchair accessible. It is located in the historic Bachmann Publick House in Easton, PA. We can also travel to your organization.
- Other information:** Can be tailored to interests of schools/classes, from academic talks to ceremonial events. We also work with educators on subjects like curriculum development & teaching accurate history involving the Lenape.

## Lenape Nation of Pennsylvania

The Lenape Nation of Pennsylvania is a 501(c)(3) non-profit organization dedicated to increasing awareness of Lenape history and culture. Created to join together the members of the Lenape Nation and anyone else interested in continuing the development of the language and culture of the Lenape people, the Lenape Nation of Pennsylvania is active in the revival of tradition and community. We encourage partnerships among people and organizations in order to foster cultural, historical, and environmental education and preservation.



**Contact:** Adam DePaul  
**Phone:** 570-817-2188  
**Email:** info@lenape-nation.org

**Website:** <https://www.lenape-nation.org/>  
**Address:** 169 Northampton St.,  
Easton, PA 1804

## A Century at Burnside Plantation

On this school tour students will investigate the farmhouse, operate the high horsepower wheel, construct a child-sized barn using early farm technology, write with a quill pen with walnut ink, and more! Students are invited to pack their lunch to enjoy on site, picnic style, after their program concludes.

<b>Topic:</b>	Daily life on a colonial farm
<b>Cost:*</b>	\$12/student in person, \$7/student virtual
<b>Length:</b>	2.5 hours in person, 5-6 hours of virtual content
<b>Maximum group size:</b>	80
<b>Adult/ Child Ratio:</b>	1:12
<b>Location/address for bus:</b>	1461 Schoenersville Road, Bethlehem, PA 18018
<b>Grade Level/ Ages:</b>	Grade 2-5
<b>Accommodations?</b>	Yes
<b>Other information:</b>	Available in person or virtually, aligns with PA Common Core standards for Grades 2-5, and integrates academic standards for STEM education themes and concepts

## Historic Bethlehem Museums & Sites

Historic Bethlehem Museums & Sites interprets three centuries of the history and culture of Bethlehem from its founding Field Trip/ On Site Visit, Virtual Program as a Moravian community in 1741 to the 21st century. By vividly telling the stories of Bethlehem's people through well-maintained buildings and sites, rare collections that are available through exhibits and research, and electrifying educational programs, we show the zeal and commitment of Bethlehem's community in forging our American nation. Historic Bethlehem Museums & Sites offers multiple school programs that can take place at our sites, as a visit to your classroom, or entirely virtually – all linked to the Commonwealth of Pennsylvania's standards. Programs can be designed to fit your needs whether you want a walking tour, museum visit, or full day program. Select programs are listed below but additional program options can be found on our website at [HistoricBethlehem.org/programs/school-tours/](http://HistoricBethlehem.org/programs/school-tours/).

**Contact:** Keith Sten  
**Phone:** 610-691-6055  
**Email:** [ksten@historicbethlehem.org](mailto:ksten@historicbethlehem.org)

**Website:** [historicbethlehem.org](http://historicbethlehem.org)  
**Address:** 74 West Broad Street, Suite 310,  
Bethlehem, PA 18018

## Rise & Fall of Bethlehem Steel

Take your students back in time when Steel reigned in Bethlehem! Students will appreciate the foundation of a diverse community that kept Bethlehem Steel in operation. Learners will understand that technology influences society through its products and processes. They will also understand how the rise of the Industrial Revolution influenced the quality of life and understand that technological changes are often accompanied by social, political and economic change.

<b>Topic:</b>	Industrial Revolution
<b>Cost:*</b>	\$10/student in person, \$7/student virtual
<b>Length:</b>	1.5 hours in person, 4-6 hours virtual content
<b>Maximum group size:</b>	50
<b>Adult/ Child Ratio:</b>	1:12
<b>Location/address for bus:</b>	101 Founders Way, Bethlehem, PA
<b>Grade Level/ Ages:</b>	Grades 4-6
<b>Accommodations?</b>	Yes
<b>Other information:</b>	Aligns with PA Common Core standards for Grades 4-6, STEM aligned activities allow students to better understand science and technology principles, Partnered with National Museum of Industrial History to create an in-depth learning experience

## Historic Bethlehem Museums & Sites

Historic Bethlehem Museums & Sites interprets three centuries of the history and culture of Bethlehem from its founding as a Moravian community in 1741 to the 21st century. By vividly telling the stories of Bethlehem's people through well-maintained buildings and sites, rare collections that are available through exhibits and research, and electrifying educational programs, we show the zeal and commitment of Bethlehem's community in forging our American nation. Historic Bethlehem Museums & Sites offers multiple school programs that can take place at our sites, as a visit to your classroom, or entirely virtually – all linked to the Commonwealth of Pennsylvania's standards. Programs can be designed to fit your needs whether you want a walking tour, museum visit, or full day program. Select programs are listed below but additional program options can be found on our website at [HistoricBethlehem.org/programs/school-tours/](http://HistoricBethlehem.org/programs/school-tours/).

**Contact:** Keith Sten  
**Phone:** 610-691-6055  
**Email:** [ksten@historicbethlehem.org](mailto:ksten@historicbethlehem.org)

**Website:** [historicbethlehem.org](http://historicbethlehem.org)  
**Address:** 74 West Broad Street, Suite 310,  
Bethlehem, PA 18018

## Canal Life Virtual Programs

Can't come to us? We can come to you, virtually. Most programs last 1 hour, and are hosted by a live educator using a slide show embedded with videos and photographs. Many programs come with an emailed teacher guide that includes information on the upcoming presentation, student handouts, and pre and post activities. Your choice of topics are, but may not be limited to:

- Immersion Day Virtual Visit
- Freemansburg Educational Center Virtual Site Visit
- Kids on the Canal
- So You Want To Be a Canal Boat Captain
- So You Want To Be a Mule Tender
- So You Want To Be a Locktender
- The Industry of the Lehigh and Delaware Canal
- The Waterways and Water Uses of the Lehigh Valley Over Time



<b>Topic:</b>	Life in the 1800s along the canal
<b>Cost:*</b>	\$75
<b>Length:</b>	1 hour
<b>Maximum group size:</b>	N/A; <b>Adult/ Child Ratio:</b> N/A; <b>Location; address for bus:</b> N/A
<b>Grade Level/ Ages:</b>	Best for elementary, can be adapted for any grade
<b>Accommodations?</b>	N/A
<b>Other information:</b>	All of the program topics can be tied to the Tales of the Towpath curriculum suitable for 3-5 grade classrooms. Additionally, these programs are offered standalone or as a supplemental experience to enhance on-site visits.

## Delaware and Lehigh National Heritage Corridor

The Delaware and Lehigh National Heritage Corridor preserves and interprets the 165-mile transportation route between Wilkes-Barre and Bristol, Pennsylvania including Easton's Hugh Moore Park. With two miles of restored Lehigh Canal, a canal boat attraction and a canal heritage museum, the 520-acre park nestled between the Lehigh Canal and Lehigh River is a throwback to the years when mules pulling canal boats on narrow towpaths was a common sight. The D&L interprets this fascinating period of American history in the park through tours of the National Canal Museum, programming and rides on the 110-passenger Josiah White II canal boat.



**Contact:** Whitney Davison  
**Phone:** 610-984-4753  
**Email:** [education@delawareandlehigh.org](mailto:education@delawareandlehigh.org)

**Website:** [www.canals.org](http://www.canals.org)  
**Address:** 2750 Hugh Moore Park Rd  
 Easton, PA 18042



## The American Silk Story

With fun activities, videos, and oral histories, students will learn about the history of silk, the connections to the Lehigh Valley, the innovation of the industry, the lives of the workers, and the reform and activism that came out of the silk mills. The worksheets can be bound to make a lasting souvenir journal.



<b>Topic:</b>	The American Silk Industry, with a focus on the Lehigh Valley
<b>Cost:*</b>	\$100
<b>Length:</b>	Unlimited Month-long access
<b>Maximum group size:</b>	30 students
<b>Adult/ Child Ratio:</b>	N/A
<b>Location/address for bus:</b>	N/A
<b>Grade Level/ Ages:</b>	Grades 3-5
<b>Accommodations?</b>	N/A
<b>Other information:</b>	This STEAM learning adventure is offered both in English and Spanish, and meets various Common Core, Pennsylvania, and New Jersey Curriculum Standards. Each of the 5 units includes a mix of interactive digital and hands-on experiences.



National Museum of Industrial History

The National Museum of Industrial History in Bethlehem, PA, is dedicated to preserving America's rich industrial heritage. Located in a 100-year-old Bethlehem Steel facility on the largest private brownfield in America, the Museum is home to exciting exhibits, engaging programs, and amazing history. We work towards inspiring the next generation of inventors, innovators, and entrepreneurs.

Our mission, in affiliation with the Smithsonian Institution, is to forge a connection between America's industrial past and the innovations of today by educating the public and inspiring the visionaries of tomorrow.

**Contact:** Emma Scheinmann

**Phone:** (610) 694-6644

**Email:** education@nmih.org

**Website:** <https://www.nmih.org/>

**Address:** 602 E 2nd St.

Bethlehem, PA 18015

## Voices of America: The Bethlehem Steel Story

Presented in Partnership with Historic Bethlehem Museums & Sites. Students will take a journey through time and learn about early industry in Bethlehem up through the last cast at Bethlehem Steel. Through the lens of the Bethlehem steel industry, students will learn our industrial history and how Bethlehem came to be an industrial capital and community.

<b>Topic:</b>	The history of the steel industry in Bethlehem
<b>Cost:*</b>	\$100
<b>Length:</b>	Unlimited Month-long access
<b>Maximum group size:</b>	30 students
<b>Adult/ Child Ratio:</b>	N/A
<b>Location; address for bus:</b>	N/A
<b>Grade Level/ Ages:</b>	Grades 3-5
<b>Accommodations?</b>	N/A
<b>Other information:</b>	This STEAM learning adventure is offered both in English and Spanish, and meets various Common Core and Pennsylvania Curriculum Standards. Each of the 5 units includes a mix of interactive digital and hands-on experiences.



The National Museum of Industrial History in Bethlehem, PA, is dedicated to preserving America's rich industrial heritage. Located in a 100-year-old Bethlehem Steel facility on the largest private brownfield in America, the Museum is home to exciting exhibits, engaging programs, and amazing history. We work towards inspiring the next generation of inventors, innovators, and entrepreneurs.

Our mission, in affiliation with the Smithsonian Institution, is to forge a connection between America's industrial past and the innovations of today by educating the public and inspiring the visionaries of tomorrow.

**Contact:** Emma Scheinmann

**Phone:** (610) 694-6644

**Email:** education@nmih.org

**Website:** <https://www.nmih.org/>

**Address:** 602 E 2nd St.

Bethlehem, PA 18015

## A Day in the Life: Speak with a Former Steel Worker

Iron and Steel are the building blocks of the Industrial Revolution and bedrock of modern, Industrial America as it rose to become a world power. But who were the people behind it all, building the America we know today? Spend 45 minutes on Zoom with a former Steel Worker, learn their story, and ask them your questions.



<b>Topic:</b>	Industrial and Steel History
<b>Cost:*</b>	\$75 for a 45-minute session for one classroom.
<b>Length:</b>	45 minutes
<b>Maximum group size:</b>	Min. 5 students; max. 30.
<b>Adult/ Child Ratio:</b>	N/A
<b>Location; address for bus:</b>	602 E. 2nd St. Bethlehem, PA 18015
<b>Grade Level/ Ages:</b>	Grades 3-12
<b>Accommodations?</b>	N/A
<b>Other information:</b>	N/A



The National Museum of Industrial History in Bethlehem, PA, is dedicated to preserving America's rich industrial heritage. Located in a 100-year-old Bethlehem Steel facility on the largest private brownfield in America, the Museum is home to exciting exhibits, engaging programs, and amazing history. We work towards inspiring the next generation of inventors, innovators, and entrepreneurs.

Our mission, in affiliation with the Smithsonian Institution, is to forge a connection between America's industrial past and the innovations of today by educating the public and inspiring the visionaries of tomorrow.

**Contact:** Emma Scheinmann  
**Phone:** (610) 694-6644  
**Email:** education@nmih.org

**Website:** <https://www.nmih.org/>  
**Address:** 602 E 2nd St.  
 Bethlehem, PA 18015

## Technology in Steel

Industry led to the rise of technology as we know it today. Engineering, applied sciences, machinery– all require scientific knowledge and technology. This 45-minute Zoom session will include an in-depth artifact tour of our Iron & Steel galleries, showcasing the significant machinery and technology behind the Steel industry.



<b>Topic:</b>	Industrial and Steel History
<b>Cost:*</b>	\$75 for a 45-minute session for one classroom.
<b>Length:</b>	45 minutes
<b>Maximum group size:</b>	Min. 5 students; max. 30.
<b>Adult/ Child Ratio:</b>	N/A
<b>Location; address for bus:</b>	602 E. 2nd St. Bethlehem, PA 18015
<b>Grade Level/ Ages:</b>	Grades 3-12
<b>Accommodations?</b>	N/A
<b>Other information:</b>	N/A



The National Museum of Industrial History in Bethlehem, PA, is dedicated to preserving America's rich industrial heritage. Located in a 100-year-old Bethlehem Steel facility on the largest private brownfield in America, the Museum is home to exciting exhibits, engaging programs, and amazing history. We work towards inspiring the next generation of inventors, innovators, and entrepreneurs.

Our mission, in affiliation with the Smithsonian Institution, is to forge a connection between America's industrial past and the innovations of today by educating the public and inspiring the visionaries of tomorrow.

**Contact:** Emma Scheinmann

**Phone:** (610) 694-6644

**Email:** education@nmih.org

**Website:** <https://www.nmih.org/>

**Address:** 602 E 2nd St.

Bethlehem, PA 18015

## Technology in Silk: Computer Coding

Have you ever seen the origin of our modern computers? This 45-minute live Zoom is a deep-dive on the Jacquard Loom, whose innovation of the Jacquard punch-card system for weaving led to computer programming as we know it today. Students will be guided through a paper-weaving or coding activity that resembles the JAcquard punch-cards system.



<b>Topic:</b>	Industrial and Silk History
<b>Cost:*</b>	\$75 for a 45-minute session for one classroom.
<b>Length:</b>	45 minutes
<b>Maximum group size:</b>	Min. 5 students; max. 30.
<b>Adult/ Child Ratio:</b>	N/A
<b>Location; address for bus:</b>	602 E. 2nd St. Bethlehem, PA 18015
<b>Grade Level/ Ages:</b>	Grades 3-8
<b>Accommodations?</b>	N/A
<b>Other information:</b>	N/A



National Museum of Industrial History

The National Museum of Industrial History in Bethlehem, PA, is dedicated to preserving America's rich industrial heritage. Located in a 100-year-old Bethlehem Steel facility on the largest private brownfield in America, the Museum is home to exciting exhibits, engaging programs, and amazing history. We work towards inspiring the next generation of inventors, innovators, and entrepreneurs. Our mission, in affiliation with the Smithsonian Institution, is to forge a connection between America's industrial past and the innovations of today by educating the public and inspiring the visionaries of tomorrow.

**Contact:** Emma Scheinmann

**Phone:** (610) 694-6644

**Email:** education@nmih.org

**Website:** <https://www.nmih.org/>

**Address:** 602 E 2nd St.

Bethlehem, PA 18015

## What is A Factory?

During this 45-minute Zoom highlights tour of our galleries, students will connect with a different place and time through a discussion of what a factory is and what working conditions were like during the late 19th century. We consider what a factory might have sounded like as we create a soundscape, and we recreate the setting as we play tableau.



<b>Topic:</b>	Industrial History
<b>Cost:*</b>	\$75 for a 45-minute session for one classroom.
<b>Length:</b>	45 minutes
<b>Maximum group size:</b>	Min. 5 students; max. 30.
<b>Adult/ Child Ratio:</b>	N/A
<b>Location; address for bus:</b>	602 E. 2nd St. Bethlehem, PA 18015
<b>Grade Level/ Ages:</b>	Grades K-2
<b>Accommodations?</b>	N/A
<b>Other information:</b>	N/A



The National Museum of Industrial History in Bethlehem, PA, is dedicated to preserving America's rich industrial heritage. Located in a 100-year-old Bethlehem Steel facility on the largest private brownfield in America, the Museum is home to exciting exhibits, engaging programs, and amazing history. We work towards inspiring the next generation of inventors, innovators, and entrepreneurs.

Our mission, in affiliation with the Smithsonian Institution, is to forge a connection between America's industrial past and the innovations of today by educating the public and inspiring the visionaries of tomorrow.

**Contact:** Emma Scheinmann  
**Phone:** (610) 694-6644  
**Email:** education@nmih.org

**Website:** <https://www.nmih.org/>  
**Address:** 602 E 2nd St.  
 Bethlehem, PA 18015

## Colonial Traveling Trunks

Have your students ever wondered what life was like for colonial Americans? Dive into our traveling trunks to experience clothing, cooking, free time activities, and work typical of colonials. Curriculum guides, suggested classroom activities, and instructions for activities that students can complete at home are included. Curriculum guides can be tailored to teacher or class level needs including colonial Nazareth history, colonial American history, and colonial Moravian history.



<b>Topic:</b>	Colonial life (clothing, cooking, free time, work) and Nazareth history
<b>Cost:</b>	TBD
<b>Length:</b>	One week rental. Can be extended.
<b>Maximum group size:</b>	N/A
<b>Adult/ Child Ratio:</b>	N/A
<b>Location/address for bus:</b>	N/A
<b>Grade Level/ Ages:</b>	3rd-5th Grades
<b>Accommodations?</b>	N/A
<b>Other information:</b>	Traveling trunks are adaptable to virtual and hybrid classrooms.



## Moravian Historical Society

The Moravian Historical Society is a nonprofit museum and historic site that preserves, interprets, and celebrates the rich culture of the Moravians. Located in Nazareth, Pennsylvania, MHS maintains the 1740–1743 Whitefield House and the 1740 Gray Cottage, the oldest surviving Moravian structure in North America. Recognized widely for its significant collection and historically important 18th-century site, the Moravian Historical Society is the third oldest historical society in Pennsylvania. The museum offers permanent and changing exhibitions and a museum store that features gifts, books, and handmade artisan items.

**Contact:** Charlotte Filiciotto

**Phone:** 610-759-5070

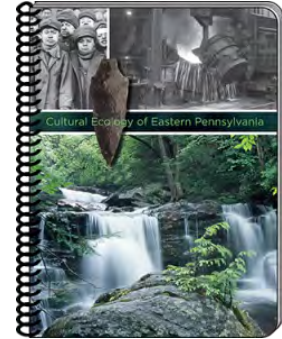
**Email:** [education@moravianhistory.org](mailto:education@moravianhistory.org)

**Website:** <https://www.moravianhistory.org/>

**Address:** 214 E. Center Street  
Nazareth, PA 18064

## Cultural Ecology Curriculum

Cultural Ecology of Eastern Pennsylvania investigates the interconnections and cause-effect relationships between humans and the environment in Northeastern Pennsylvania through a cultural/ ecological lens. The multi-disciplinary curriculum includes five units that span the course of 16,000 years, beginning with the arrival of the first humans in Pennsylvania, progressing to European settlement, into the 19th century Industrial Revolution through the 20th century local industries into an examination of the reclamation of damaged natural resources, through environmental awareness and laws that mandate the protection of water, air and land.



<b>Topic:</b>	Ecology of northeastern Pennsylvania
<b>Cost:*</b>	Call for quote
<b>Length:</b>	varies
<b>Maximum group size:</b>	N/A
<b>Adult/ Child Ratio:</b>	N/A
<b>Location/address for bus:</b>	2750 Hugh Moore Park Rd Easton PA 18042 or on site at school
<b>Grade Level/ Ages:</b>	High School/ Early college
<b>Accommodations?</b>	N/A
<b>Other information:</b>	This curriculum was developed with state and national standards in mind and was well-researched for historical and scientific accuracy.

## Delaware and Lehigh National Heritage Corridor

The Delaware and Lehigh National Heritage Corridor preserves and interprets the 165-mile transportation route between Wilkes-Barre and Bristol, Pennsylvania including Easton's Hugh Moore Park. With two miles of restored Lehigh Canal, a canal boat attraction and a canal heritage museum, the 520-acre park nestled between the Lehigh Canal and Lehigh River is a throwback to the years when mules pulling canal boats on narrow towpaths was a common sight. The D&L interprets this fascinating period of American history in the park through tours of the National Canal Museum, programming and rides on the 110-passenger Josiah White II canal boat.



**Contact:** Whitney Davison

**Phone:** 610-984-4753

**Email:** [education@delawareandlehigh.org](mailto:education@delawareandlehigh.org)

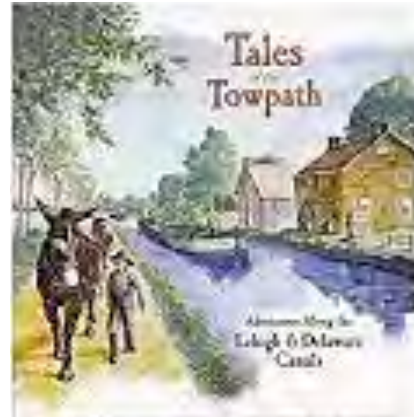
**Website:** [www.canals.org](http://www.canals.org)

**Address:** 2750 Hugh Moore Park Rd  
Easton, PA 18042



## Tales of the Towpath Curriculum

Tales of the Towpath is a standardized third through fifth grade social studies/language arts curriculum developed from the historical fiction chapter book of the same name. The reader follows Finn Gorman, a 10 year old boy on his first trip as a mule tender with his captain father. As he travels he is exposed to local industries such as coal, iron, lumber, and agriculture and grapples with environmental conservation concerns as he watches nature disappear around him.



<b>Topic:</b>	Life on the canal in the 1800s
<b>Cost:*</b>	Call for quote
<b>Length:</b>	flexible, can be done in about a month
<b>Maximum group size:</b>	N/A
<b>Adult/ Child Ratio:</b>	N/A
<b>Location; address for bus:</b>	2750 Hugh Moore Park Rd Easton PA 18042 or on site at school
<b>Grade Level/ Ages:</b>	2-5 grade
<b>Accommodations?</b>	N/A
<b>Other information:</b>	This curriculum has been taught in local schools for 10+ years. It was developed with state standards and national standards in mind and was well researched for historical accuracy.

## Delaware and Lehigh National Heritage Corridor

The Delaware and Lehigh National Heritage Corridor preserves and interprets the 165-mile transportation route between Wilkes-Barre and Bristol, Pennsylvania including Easton's Hugh Moore Park. With two miles of restored Lehigh Canal, a canal boat attraction and a canal heritage museum, the 520-acre park nestled between the Lehigh Canal and Lehigh River is a throwback to the years when mules pulling canal boats on narrow towpaths was a common sight. The D&L interprets this fascinating period of American history in the park through tours of the National Canal Museum, programming and rides on the 110-passenger Josiah White II canal boat.



**Contact:** Whitney Davison  
**Phone:** 610-984-4753  
**Email:** [education@delawareandlehigh.org](mailto:education@delawareandlehigh.org)

**Website:** [www.canals.org](http://www.canals.org)  
**Address:** 2750 Hugh Moore Park Rd  
 Easton, PA 18042

## ACT 48 Teacher Training for Tales of the Towpath

During this 1-day ACT 48 teacher training staff will learn best practices for teaching Tales of the Towpath. Over the course of the day an overview will be given of the book, the traveling trunk and the teacher manual and student activities. Staff will also receive a lesson on canal history which includes a tour of the museum and a ride on our canal boat.



<b>Topic:</b>	How to use the Tales of the Towpath Curriculum
<b>Cost:*</b>	TBD
<b>Length:</b>	6 hours
<b>Maximum group size:</b>	N/A
<b>Adult/ Child Ratio:</b>	N/A
<b>Location/address for bus:</b>	2750 Hugh Moore Park Rd Easton PA 18042 or on site at school
<b>Grade Level/ Ages:</b>	N/A
<b>Accommodations?</b>	Handicap accessible
<b>Other information:</b>	We will work with schools to adapt training to the schools needs. We can offer a refresher course, a course for new teachers. We can combine with another school. We can teach to small or large groups, split the training over multiple days, and have it at the school site or at our museum.

## Delaware and Lehigh National Heritage Corridor

The Delaware and Lehigh National Heritage Corridor preserves and interprets the 165-mile transportation route between Wilkes-Barre and Bristol, Pennsylvania including Easton's Hugh Moore Park. With two miles of restored Lehigh Canal, a canal boat attraction and a canal heritage museum, the 520-acre park nestled between the Lehigh Canal and Lehigh River is a throwback to the years when mules pulling canal boats on narrow towpaths was a common sight. The D&L interprets this fascinating period of American history in the park through tours of the National Canal Museum, programming and rides on the 110-passenger Josiah White II canal boat.



**Contact:** Whitney Davison  
**Phone:** 610-984-4753  
**Email:** [education@delawareandlehigh.org](mailto:education@delawareandlehigh.org)

**Website:** [www.canals.org](http://www.canals.org)  
**Address:** 2750 Hugh Moore Park Rd  
Easton, PA 18042

PASSPORT  
*Lehigh Valley*  
TO HISTORY

